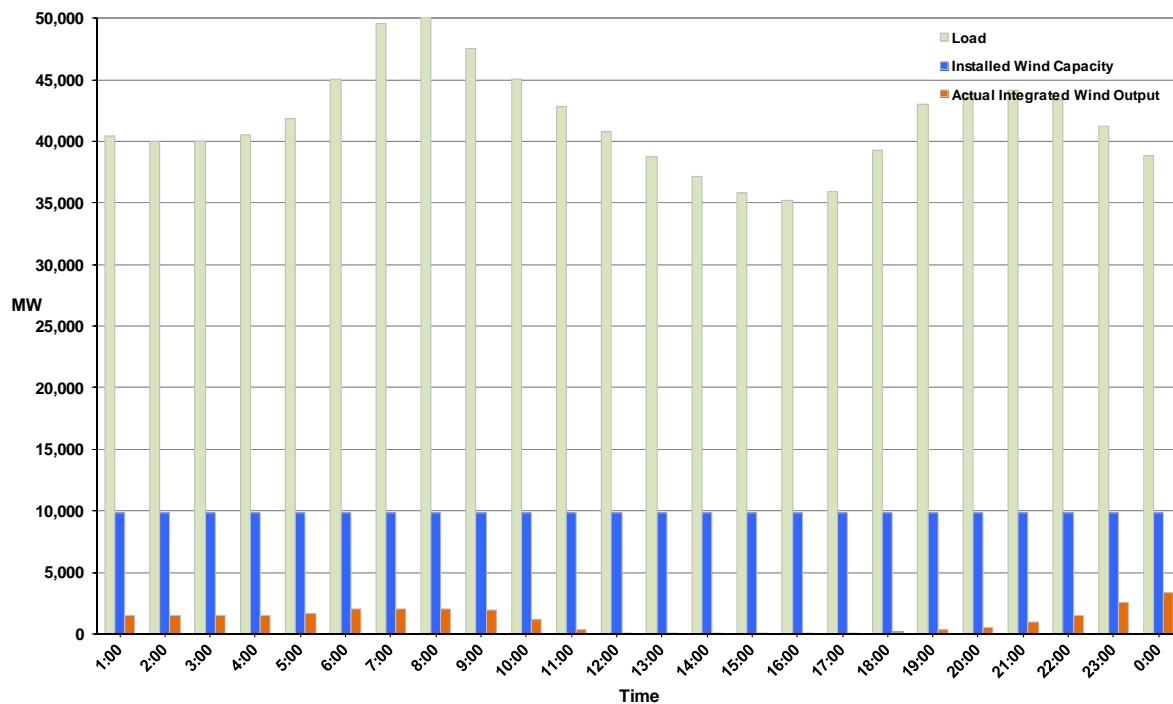




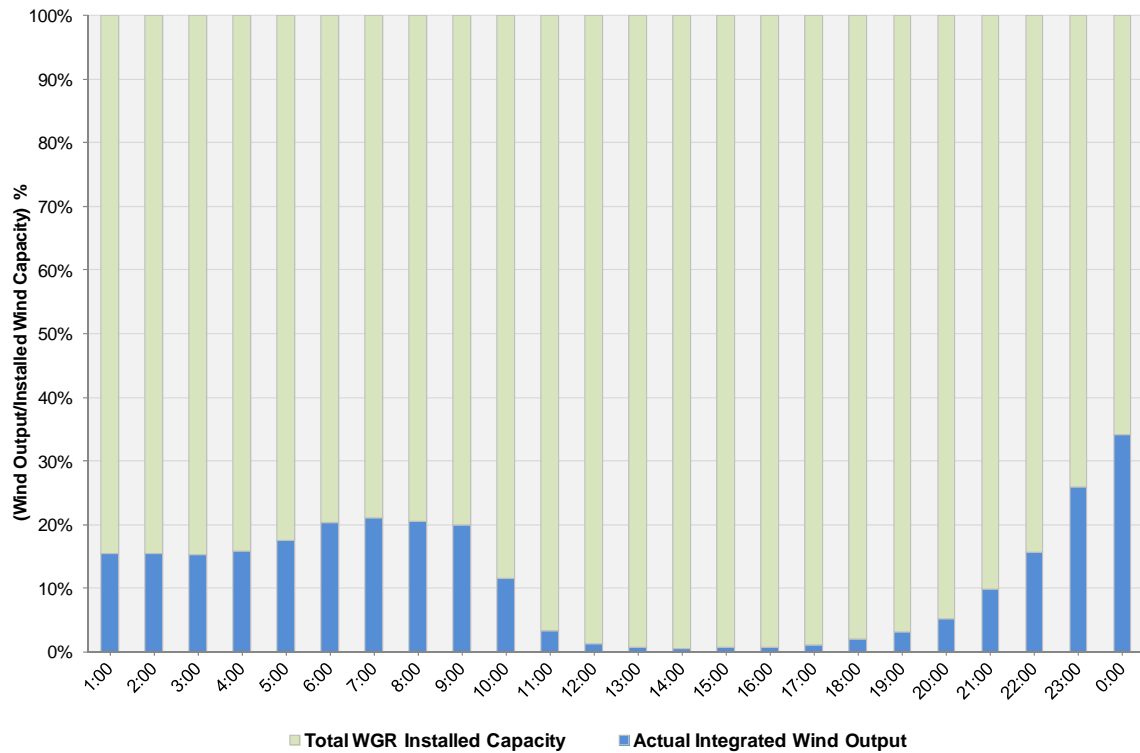
## ERCOT Grid Operations Wind Integration Report: 12/07/11

Peak Load	<b>50,091 MW</b>
Load Peak Hour	<b>08</b>
Wind over Peak	<b>2,007 MW</b>
Wind Record 10/07/11	<b>7,400 MW</b>
Max Wind Value	<b>3,699 MW</b>
Wind Peak Time	<b>23:50</b>
Wind Integration %	<b>9.66%</b>

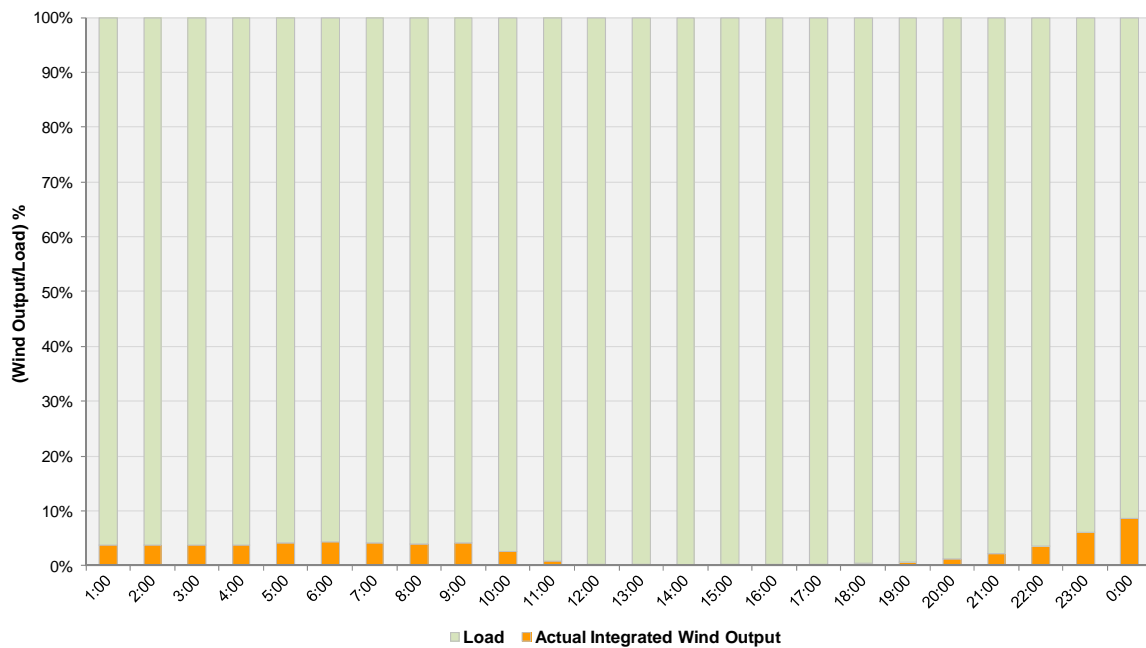
**Hourly Average Actual Load vs. Actual Wind Output  
12-07-2011**



**Actual Wind Output as a Percentage of the Total Installed Wind Capacity**  
**12-07-2011**



**Actual Wind Output as a Percentage of the ERCOT Load**  
**12-07-2011**



ERCOT Load vs. Actual Wind Output 11/30/2011 - 12/7/2011

